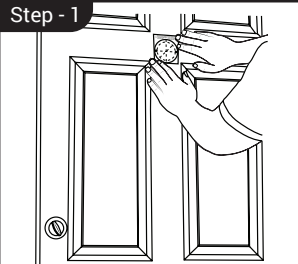


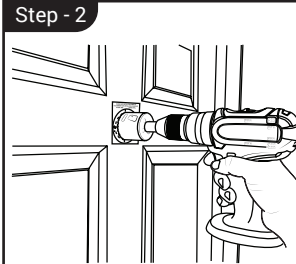
INSTALLATION GUIDE

Tools Needed

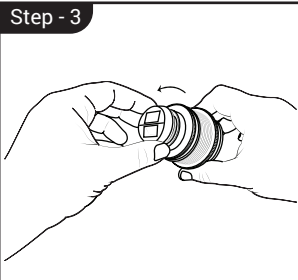
- 2-3/8" Hole Saw
- 1/8" Drill Bit



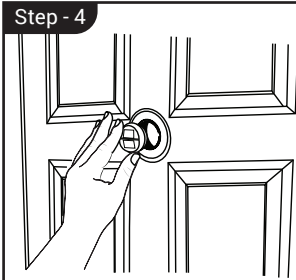
Step - 1
Affix the enclosed drill template on a desired location on the door. Make sure to level the horizontal line on the template with the small holes being perpendicular to the horizon.



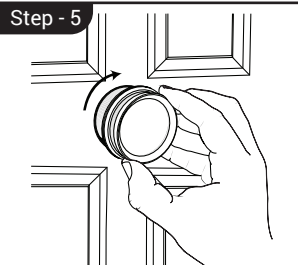
Step - 2
Drill holes as indication on the template. Caution: Drill the two holes from the outside and not deeper than 1/4". Do not drill fully through the door.



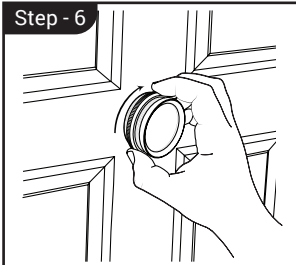
Step - 3
Unscrew the prism portion from the main body of the Door Viewer DS238 counter clockwise.



Step - 4
Insert the prism and bezel together to the door from the outside



Step - 5
Put the main body of the DS238 through the hole from the inside and screw the body clockwise into the front end piece while holding the front end piece from the outside.



Step - 6
After the front end piece and the body are tight, hand tighten the nut on the inside to firmly secure the Door Viewer DS238 to the door.

Support or Ordering information

Advanced Safety Devices

21430 Strathern St Unit M
Los Angeles, CA 91304

TEL: (818)701-9200 FAX: (818)701-9220

www.safety-devices.com

sales@safety-devices.com

Warranty

The Manufacturer warrants the Door Viewer to be free from defects in the workmanship or material under normal use for one year from the date of purchase. Manufacturer's obligations under this limited warranty are limited to replacing, or repairing the unit if returned along with the proof of purchase. This warranty is void if the unit has been tampered with, maliciously damaged, physically abused or installed with improper tools.

The enforceability of this warranty is limited to the original purchaser and is not transferable to, or enforceable by any subsequent owner. In the event of a defect, malfunction or other failures conforming to this warranty, ASD, LLC, will at its sole discretion, repair or replace the unit. You are responsible for all shipping costs in connection with warranty service. This warranty commences on the date of purchase and shall be effective for a period of one year.

Disclaimer

Advanced Safety Devices, LLC makes no warranties, expressed or implied, as to the ability of this device to determine proper identification of the image by user, and ASD expressly disclaims any liability for incidental, special, or consequential damages of any nature. Decisions and/or actions based upon the image viewed through this device shall be at such person's own risk. ASD assumes no responsibility for consequences by subjects who may install this device in conditions with inadequate lighting, which are required for properly illuminating the object. The exact identification of any object by this device may not be possible and therefore, additional means must be used to properly identify any object through this device.